



Lower Limb - Recommendations for Clinical Care

Contents

Lower Limb Ulcers - Introduction	1
Immediate and Necessary Care	3
Wounds on the Foot.....	6
Wounds on the Leg	9
Reference List	14
Lower Limb Clinical Care Flowchart.....	16



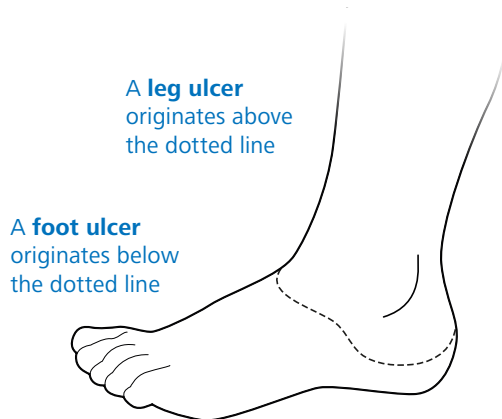
Please cite as:
National Wound Care Strategy Programme: (2020)
Recommendations for Lower Limb Ulcers.

Lower Limb Ulcers

Introduction

The National Wound Care Strategy Programme (NWCSP) is seeking to improve the care of wounds. The unwarranted variation in UK wound care services offers major opportunities to improve healing rates and thus reduce patient suffering, spend on inappropriate and ineffective treatments and the amount of clinical time spent on wound care.

Lower Limb ulcers are wounds on the lower leg (below the knee) and foot that are slow to heal. It is estimated that approximately 1.5% of the adult population in the UK is affected by active leg and foot ulceration, which equates to 730,000 patients¹. There is considerable variation in practice and outcomes² which increases care costs and extends healing times³.



Leg ulceration

For the purpose of these recommendations, a wound on the leg is defined as a wound that originates on or above the malleolus.

The biggest proportion of leg ulceration is due to venous insufficiency. There is robust evidence to support the use of compression therapy⁴ and endovenous surgery⁵ as first-line therapies to promote healing of venous leg ulceration. A recent UK randomised trial⁵ reports healing rates as high as 76.3% at 24 weeks when using compression therapy alone and 85.6% when endovenous surgery supplemented compression therapy.

These results are in line with systematic reviews which report that compression therapy doubles the chances of venous ulcer healing^{4 6}.

By contrast, it is estimated that UK practice is only achieving healing rates of 47% at 12 months for venous leg ulceration⁷. Admittedly, these low healing rates are across populations of ulcer patients rather than samples of patients who are suitable and willing to take part in randomised trials and thus likely to be more willing or able to comply with care delivered by clinicians with a specialist interest.

However, there is a strong argument that commissioning equitable and accessible services for leg ulceration would reduce unwarranted variation of care, increase the use of evidence-based care and discourage the over-use of therapies for which there is insufficient evidence², resulting in higher healing rates.

Foot ulceration

Foot ulceration is also an issue of concern. People with diabetes are 23 times more likely to have a leg, foot or toe amputation than someone without diabetes, and both ulceration and amputation are associated with high mortality⁸.

The growing burden of diabetes and its complications has led to a national diabetes strategy⁹ with examples of significant regional service transformation¹⁰. However, over half of all major amputations are in patients who do not have diabetes^{11 12}. The major amputation rate is falling in the diabetic population faster than the non-diabetic population, but minor amputations are rising with the increase driven by non-diabetic men¹³.

It seems likely that this might be due to improved service provision for diabetes patients or poor access to equivalent services for the non-diabetic population. Again, there is a strong argument for commissioning equitable and accessible services for all patients with foot ulceration.

Recommendations

People with leg or foot wounds usually only present to a clinician if healing is problematic or anticipated to be problematic. These evidence-informed recommendations support excellence in preventing, assessing and treating such people with leg and foot wounds to optimise healing and minimise the burden of wounds for patients, carers and health and care providers.

These recommendations have been developed in collaboration with the NWCSP pressure ulcer and surgical wounds clinical workstreams and the NWCSP data and information, supply and distribution, research evidence and education and workforce enabler workstreams. The recommendations have been informed through consultation with the NWCSP Stakeholder Forums.

The recommendations signpost to relevant clinical guidelines or outline evidence-informed care that will improve healing and optimise the use of healthcare resources. The recommendations outline a pathway of care that promotes rapid diagnosis, enabling fast access to appropriate therapeutic interventions with swift escalation of treatment or service provision for patients requiring more complex care.

The recommendations thus offer a framework for the development of local delivery plans that includes consideration of:

- Relevant research evidence (where it exists) to inform care.
- Configuration of services and deployment of workforce.
- Appropriate education for that workforce.
- Relevant metrics to measure quality improvement.

These recommendations are intended for use in all clinical care settings. They do not replace existing evidence-informed clinical guidelines or replace clinical judgement and decision making in relation to the needs of the individual patient, but seek to bring attention to such evidence and support planning for implementation into clinical practice.

Recommendations for Clinical Care

Immediate and Necessary Care

The guidance applies to people who have one or more wounds below the knee.

- A leg wound is a wound that originates on or above the malleolus (ankle bone) but below the knee.
- A foot wound is a wound that originates below the malleolus.

RED FLAGS

- 🚩 Acute infection of leg or foot (e.g. increasing unilateral redness, swelling, pain, pus, heat).
 - 🚩 Symptoms of sepsis¹⁴.
 - 🚩 Acute or chronic limb threatening ischaemia^{15 16}.
 - 🚩 Suspected acute deep vein thrombosis (DVT).
 - 🚩 Suspected skin cancer.
- Treat suspected infection in line with NICE antimicrobial guidelines¹⁷.
 - Immediately escalate to relevant clinical specialist.
 - For people in the last few weeks of life, seek input from their other clinicians to agree an appropriate care plan.

Immediate care should include:

- Wound bed, peri-wound and limb skin cleansing and emollient, as required¹⁸.
- Simple low-adherent dressing with sufficient absorbency¹⁸.
- For leg wounds, first line mild graduated compression (see explanatory notes)¹⁹.
- When appropriate, people with leg and foot wounds should be supported to self-care.

Assessment times

In hospital with a diabetic foot wound

Refer to MDT **within 24 hours**

A diabetic foot wound or any other type of foot wound

Refer to MDT **within 1 working day**

Leg wounds

Assess **within 14 days**

Assessment for diagnosis and treatment planning

Within 24 hours of identification of a non-healing wound:

- Escalate to a clinician with advanced wound care capabilities/competencies working within a multi-disciplinary team system for assessment, diagnosis and treatment planning.
- **A person with diabetic foot problems being admitted to hospital**, or the detection of diabetic foot problems (if the person is already in hospital) should be referred to the multidisciplinary foot care service **within 24 hours** of the initial examination of the person's feet. The responsibility of care should be transferred to a consultant member of the multidisciplinary foot care service if a diabetic foot problem is the dominant clinical factor for inpatient care²⁰.
- **For all other active diabetic foot problems**, refer the person **within 1 working day** to the multidisciplinary foot care service or foot protection service²⁰.

Continued overleaf >

- **A person with a non-diabetic foot wound**, refer the person **within 1 working day** to the multidisciplinary foot care service or foot protection service.
- **A person with a leg wound** presenting should be assessed (including vascular assessment of arterial supply) **within 14 days** of original presentation.

Wounds due to pressure damage associated with immobility or a medical device

- Report using local incident reporting system and the revised definitions and measures²².

Explanatory Notes

Red Flag Symptoms: The listed 'red flag' symptoms are those that the NWCSP Lower Limb Workstream has identified as requiring immediate attention from a relevant specialist to reduce the risk of rapid deterioration or serious harm.

Treatment of an infected diabetic foot ulcer should follow the [NICE Guideline for Diabetic Foot Problems](#)²⁰.

Treatment of an infected leg ulcer should follow the [NICE Guidance for Leg ulcer infection: antimicrobial prescribing](#)²³.

The absence of foot pulses is not included as a 'red flag' symptom because pulse palpation has poor sensitivity and specificity as a diagnostic sign for inadequate arterial supply²⁴.

Some people in the last few weeks of life may benefit from some of the standard therapeutic interventions for lower limb ulceration to improve their quality of life. However, the complexity of the health needs of these people means that a multi-disciplinary approach is particularly important in planning their health care to optimise outcomes and reduce the risk of harm.

Immediate Care: Prevention of injuries (which may be the start of lower limb ulceration) is outside the remit of the NWCSP, but early appropriate care can prevent leg and foot wounds that are non-healing, or at risk of non-healing, becoming ulcers. *The literature commonly defines a leg ulcer as an open lesion between the knee and ankle joint that remains unhealed for at least two to four weeks.*

It is good practice to cleanse the wound bed, peri-wound (around the wound) and the limb and apply emollient to moisturise the surrounding skin. The method of cleansing will depend on the situation in which care is being undertaken

and the individual needs of the patient. While debridement may be required for leg and foot wounds, in most cases, this will not form part of initial and necessary care.

No robust evidence has been identified to support the superiority of any dressing type over another for standard care of leg or foot wounds.

Therefore, simple low-adherent dressings with sufficient absorbency are recommended as first line care but this recommendation does not replace clinical judgement and decision making in relation to the needs of the individual patient.

People with leg and foot wounds with red flag symptoms should not be treated with compression.

The recommendation for wounds on the leg to be treated with mild compression is based on the British Lymphology Society view that, providing people with 'red flag' symptoms (such as the symptoms of arterial insufficiency) are excluded, the benefits of first line mild compression outweigh the risks, even for people without obvious signs of venous insufficiency¹⁹.

In most clinical situations, it is not possible to precisely measure the level of compression that is applied since this is dependent on several factors including ankle circumference, choice of compression system and clinician skill. For the purpose of this guidance, 'mild graduated compression' is defined as a compression system that is intended to apply 20mmHg or less at the ankle. This is based on the World Union of Wound Healing Societies definition of 'mild graduated compression' and is intended to illustrate what is meant as 'mild graduated compression' rather than being a precise level of compression required.

[Continued overleaf >](#)

Assessment for Diagnosis and Treatment:

People with foot ulcers, whether associated with diabetes or not, are at high risk of leg, foot or toe amputation and increased risk of death^{8 11 12 14}.

All people with non-healing wounds on the foot should be able to swiftly access services for assessment, diagnosis and treatment planning.

People with leg wounds usually only seek clinical advice when healing is delayed or there are risk factors for non-healing. People with non-healing leg wounds should receive assessment within 14 days of initial presentation as it is likely that such wounds will already have been present for some time before this and further delay increases healing times and suffering.

Parity is desirable for both foot and leg ulcer assessment, but in the absence of 'red flag' symptoms, leg ulceration has a lower risk of mortality or severe morbidity than foot ulceration.

This justifies a time frame of 14 days between initial presentation and assessment for people with leg wounds, compared to within 24 hours for a person with foot wounds.

A multi-disciplinary team (MDT) approach to care is essential. The multidisciplinary team for diagnosis and treatment may include clinicians from podiatry, nursing, medicine, tissue viability, vascular, lymphoedema and dermatology services with the capabilities/competencies identified for advanced practitioners.

Wounds Associated with Pressure Damage:

NICE²¹ requires NHS Trusts to report skin pressure damage of Category 2 or above. Therefore, it is important to differentiate between pressure ulcers on the foot and foot ulceration due to other causes.

A pressure ulcer is a localised injury to the skin and/or underlying tissue usually over a bony prominence, primarily as a result of unrelieved static pressure due to immobility in combination with shear²¹.

A foot ulcer can be defined as a breakdown in the skin that occurs below the ankle¹⁶. Foot ulcers generally present on the plantar aspect of the foot and dorsal interphalangeal joints and apex of toes.

Pressure ulcers are found in places of pressure over bony prominences usually associated with unrelieved static pressure due to immobility. Many foot ulcers have an element of pressure as part of the aetiology. Footwear may be a cause of this pressure but may only be a problem if there is also lack of circulation and / or sensation in the foot²⁶.

When all individual clinical and non-clinical factors pertaining to the person are considered and the predominant causative factor is static pressure, then the wound should be considered a pressure ulcer and reported as such.

When the predominant factor is disease related e.g. diabetes, neuropathy, arterial disease, as the NICE definition of a pressure ulcer²¹ relates to static pressure not ambulatory pressure, the wound should not be considered a pressure ulcer in people who are independently mobile²¹ unless the pressure damage has been caused by a prescribed orthosis or cast.

Wounds on the Foot

Diagnosis and Treatment

1 Assess and identify contributing causes for non-healing by undertaking an assessment that includes:

- Comprehensive assessment including clinical and psychosocial needs, review of medication, pain and analgesia needs, possible infection, nutrition.
- Screening for diabetes.
- Wound assessment documented using wound minimum data set²⁶ and wound imaging.
- Lower limb assessment that includes:
 - a. Vascular assessment of arterial supply.
 - b. Neuropathic assessment for sensation.
 - c. Biomechanical assessment¹⁶.

2 Diagnose cause of non-healing and formulate treatment plan:

All types of foot wound

- Wound bed cleansing, debridement, peri-wound and limb skin cleaning and emollient, as required. *Sharp debridement should only be undertaken by healthcare professionals with the relevant training and skills.*
- Dressing selection should consider the clinical assessment of the wound and the person's preference, with the lowest acquisition cost appropriate to the clinical circumstances¹⁸.
- Analgesia, as required.
- Implement offloading and pressure redistributing strategies as required²⁰.
- Follow NICE guideline¹⁷ and local policy for infection and antimicrobial stewardship.
- If there is evidence of ischaemia, refer for vascular surgical interventions.

- Offer advice on skin care, footwear, exercise and mobility, rest and limb elevation, nutrition and supported self-care and if appropriate, smoking cessation and weight loss.
- Provide written information about their diagnosis and treatment plan and identify, discuss and incorporate opportunities for supported self-care into treatment plans as agreed with the individual.

People with confirmed or suspected diabetic foot ulceration

- More detailed information about the management of people with confirmed or suspected diabetic foot ulceration can be found in the [NICE Guideline for Diabetic Foot Problems](#)²⁰.

People with confirmed or suspected peripheral arterial disease

- More detailed information about the management of people with confirmed or suspected peripheral arterial disease can be found in the [NICE Guideline for Peripheral Arterial Disease](#)¹⁶.

Explanatory Notes

Foot ulceration can be due to different underlying causes, but amputation is a risk for many of these causes, especially for severe peripheral arterial disease which often manifests as foot ulceration. Rapid assessment, diagnosis and treatment is crucial for all those with foot ulceration, especially when half of all major amputations are in those without diabetes¹¹.

The establishment of diabetic foot clinics has done much to address the needs of those with diabetic foot ulceration, but such clinics are not designed or resourced to meet the needs of people with foot ulcers without diabetes. The NWCSP recognises that whilst some healthcare services have adopted a 'high risk foot' approach to address this inequality, more is needed to ensure that all patients with foot ulcers can access appropriate care.

A multi-disciplinary team (MDT) approach to care is essential. People with foot ulceration may require complex interventions such as offloading, vascular surgical interventions, orthopaedic/podiatric/plastic surgery, microbiology and toe and foot compression alongside specialist medical management of contributing disease. A multidisciplinary foot care service or foot protection service should be able to offer access to such services.

The multidisciplinary team for diagnosis and treatment may include clinicians from podiatry, nursing, medicine, tissue viability, vascular,

lymphoedema and dermatology services with the capabilities/competencies identified for advanced practitioners.

The recommendations in this section refer to the current NICE guideline advice^{16 20} where more detailed information and condition-specific recommendations can be found.

Assessment: For all types of foot ulcer, accurate wound assessment is essential for monitoring wound healing, as wound size and wound bed status form the baseline against which all subsequent treatment effectiveness will be measured. Wound imaging should be incorporated into wound assessment and regarded as part of standard practice.

Treatment: The foot is a highly complex part of anatomy and people with foot ulceration are at high risk from infection and other complications. Therefore, debridement should only be undertaken by healthcare professionals with the relevant training and skills such as podiatrists and nurses working at advanced level or surgeons.

While there is a lack of robust evidence for first line dressings for promoting foot ulcer healing, there is some evidence to guide dressing selection for people with hard to heal foot ulcers. Dressing selection should therefore take account of current research evidence as well as patient preferences and cost.

Ongoing care and review

At each dressing change

- Wound bed cleansing and debridement, peri-wound and limb skin cleaning and emollient, as required.
- Review effectiveness of treatment plan and escalate any concerns to the relevant clinical specialist.
- Where appropriate, people with foot wounds should be encouraged to self-care with support.

At weekly intervals

- Review effectiveness of treatment plan and escalate any concerns to the relevant clinical specialist.
- Wounds that are deteriorating should be urgently escalated to the relevant clinical specialist.

At 4-week intervals

(or more frequently if concerned)

- Assess for reduction in wound size and document using wound imaging.
- Assess condition of skin.
- Assess pain/discomfort.

Wounds that are not improving/concerns identified at regular dressing changes

Wounds that are not improving should be escalated to the local specialist service for advice. Where possible, care should continue to be delivered by the local care team under the supervision of the specialist team.

At 12 weeks

For wounds that remain unhealed, undertake a comprehensive re-assessment.

More detailed advice for people with diabetic foot ulceration can be found in the [NICE Guideline for Diabetic Foot Problems](#)²⁰.

More detailed advice for people with peripheral arterial disease can be found in the [NICE Guideline for Peripheral Arterial Disease](#)¹⁶.

Review schedule



Wounds on the Leg

Diagnosis and Treatment

The guidance applies to people who have one or more wounds that originate on or above the malleolus (ankle bone).

1. Assess and identify risk factors for non-healing by undertaking an assessment that includes:

- Comprehensive assessment including clinical and psychosocial needs, review of medication, pain and analgesia needs, possible infection, nutrition.
- Wound assessment documented using wound minimum data set²⁶ and wound imaging.
- Lower limb assessment that includes:
 - Vascular assessment of arterial supply¹⁸.
 - Neuropathic assessment for sensation.
 - Lymphoedematous changes.

2. Diagnose cause of non-healing and formulate treatment plan

All types of leg wound:

- Wound bed cleansing and debridement, peri-wound and limb skin cleaning and emollient, as required¹⁸.
- Simple low-adherent dressing with sufficient absorbency¹⁸.
- Follow NICE Guidelines²⁰ and local policy for infection and antimicrobial stewardship.
- Offer advice on skin care, footwear, exercise and mobility, rest and limb elevation, nutrition and supported self-care and if appropriate, smoking cessation and weight loss.
- Provide written information about diagnosis and treatment plan and identify, discuss and incorporate opportunities for supported self-care into treatment plans as agreed with the individual.
- Analgesia, as required.
- Where possible, people with leg wounds should be encouraged to self-care with support.

Leg wounds with an adequate arterial supply and where no aetiology other than venous insufficiency is suspected:

- Refer for venous surgical/endovenous interventions^{5 27}.
- Offer care in line with the SIGN Clinical Guideline for Venous Leg Ulcers¹⁸. This should include:
 - Information about the benefits of compression therapy.
 - Strong compression therapy (see [explanatory notes](#))⁴.

People with:

- Chronic ankle/leg oedema not reduced by elevation; or
- Abnormal limb shape; or
- Copious exudate, or
- Very fragile skin, should be offered strong multi-component compression bandaging (see [explanatory notes](#))^{4 6 18 19}. If these symptoms do not improve, escalate for expert diagnosis and advice about lymphoedema²⁸.

People without the above symptoms should be offered strong compression in the form of two-layer compression hosiery kits as first line treatment²⁹ (with strong multi-component compression bandaging^{4 6 18 19} as an alternative.) The need for application aids should be considered.

For people with advanced, unstable cardiac failure, liaise with their cardiac clinician to agree how to offer compression to optimise healing while minimising additional cardiac burden.

Leg wounds with signs of arterial disease

- Refer for vascular surgical/endovenous interventions and advice on compression.
- Follow [NICE Guideline for Peripheral arterial disease](#)¹⁶.
- Pending vascular opinion:
 - If limb is oedematous but with no signs of arterial insufficiency, continue with mild graduated compression (see [explanatory notes](#)).

Leg wounds of other or uncertain aetiology

- Refer for a dermatology opinion (or other specialist depending on symptoms and service arrangements).
- Pending specialist opinion
 - Providing there are no signs of arterial insufficiency, continue with mild graduated compression (see [explanatory notes](#)).

Lymphoedema

People with suspected lymphoedema should be offered care in line with the [International Lymphoedema Framework Recommendations](#)²⁸.

Explanatory Notes

Assessment: Accurate wound assessment is essential for monitoring wound healing as wound size and wound bed status form the baseline against which all subsequent treatment effectiveness will be measured. Wound imaging should be incorporated into wound assessment and regarded as part of standard practice.

Palpation of pulses is known to be an unreliable form of vascular assessment of arterial supply²⁴ so, as a minimum, vascular assessment of arterial supply should be undertaken by using Doppler to measure the ankle brachial pressure index (ABPI) or other evidence-informed methods. A venous duplex scan is considered a gold standard form of assessment for patients with lower leg wounds so should also be part of assessment, where possible.

Neuropathic assessment for sensation is recommended to reduce the risk of pressure damage from compression therapy. People with impaired sensation may be unable to identify discomfort from inappropriately applied compression therapy so may require closer monitoring.

Lymphoedematous changes include swelling that does not resolve on elevation/overnight, thickening of skin and subcutaneous tissues, shape distortion, hyperkeratosis.

Treatment: No robust evidence has been identified to support the superiority of any dressing type over another for any type of non-healing leg wounds.

Therefore, simple low-adherent dressings with sufficient absorbency are recommended as first line care but this recommendation does not replace clinical judgement and decision making in relation to the needs of the individual patient.

There is good evidence in favour of endovenous ablation for healing venous leg ulcers and preventing recurrence and this is recommended in the [NICE Guideline for Varicose Veins](#)²⁷. However, there will be some people for whom a vascular referral would be inappropriate (e.g. those unsuitable for surgical/endovenous intervention due to infirmity) so this recommendation does not replace clinical judgement and decision making in relation to the needs of the individual patient.

People with leg wounds with an adequate arterial supply and where no aetiology other than venous insufficiency is suspected, should be offered care in line with the SIGN clinical guideline for venous leg ulcers¹⁸, which is currently the most recent UK national clinical guideline for this condition.

However, since the publication of the SIGN Guideline, several relevant NIHR funded studies have been published so these recommendations also incorporate the evidence from these studies.

[Continued overleaf >](#)

In most clinical situations, it is not possible to precisely measure the level of compression that is applied since this is dependent on several factors, including ankle circumference and clinician skill.

For the purpose of this guidance, strong compression is defined as an elastic compression system that is intended to apply at least 40mmHg at the ankle or a non-elastic (e.g. short stretch) system applied at full stretch.

There is evidence that for those willing to wear them, two-layer compression hosiery kits are an effective alternative to four-layer bandaging for healing venous leg ulcers, are more cost effective, may reduce recurrence rates and increase quality of life²⁹ and are more likely to enable people to self-care. However, two-layer compression hosiery kits are not suitable for all people with venous leg ulcers so multi-component compression bandaging should be offered to patients with significant oedema, exudate, fragile skin and abnormal limb shape.

The margins of uncertainty around the current evidence for compression therapy mean that it is not possible to recommend one type of elastic system designed to deliver 40mmHg over another. Whilst there is stronger evidence for four-layer bandaging and short stretch bandaging over two-layer graduated compression, all these systems are used in the UK. Ultimately, the choice of type of compression therapy should be the choice of the person with the wound.

Regarding 'wrap' compression systems, the lack of evidence of effectiveness has led to an ongoing NHS funded randomised controlled trial (VENUS-6³¹) to investigate this issue.

Clinicians who wish to offer wrap compression systems are encouraged to do so within the trial to enable swift recruitment and completion of this study.

Mild compression is thought to have benefits for people with leg wounds, even without obvious signs of venous insufficiency by supporting the vein to improve venous return and by reducing oedema, reduce pressure on both veins and arteries. These benefits are thought to outweigh potential risks in people without 'red flag' symptoms¹⁷.

Chronic oedema/lymphoedema is common in people with lower limb ulceration. The clinician responsible for diagnosis and treatment planning should either have capabilities/competencies for managing lymphoedema or be able to refer to specialist lymphoedema services for specialist input.

Oral pentoxifylline, a drug which helps blood flow, has been used to treat venous leg ulcers. Although compression bandaging is the mainstay of treatment to promote healing in people with venous leg ulcers, some venous ulcers remain unhealed and some people are unsuitable for compression therapy.

A Cochrane Review³⁰ found evidence that oral pentoxifylline is an effective adjunct to compression bandaging for treating venous ulcers and may be effective in the absence of compression. However, caution is needed when making prescribing decisions as many people with venous leg ulcers may already use polypharmacy and gastrointestinal disturbances (nausea, indigestion and diarrhoea) are a known adverse event in some patients.

Ongoing care and review

For all types of leg ulcer:

Provision of information

Patients and the health care providers who will be responsible for ongoing care should be provided with written information about:

- The diagnosis of the ulcer.
- Details of previous care.
- Ongoing care, including self-care and health promotion opportunities.
- When to seek advice and specific information (including names and phone numbers) about who to contact from the previous clinical care provider.

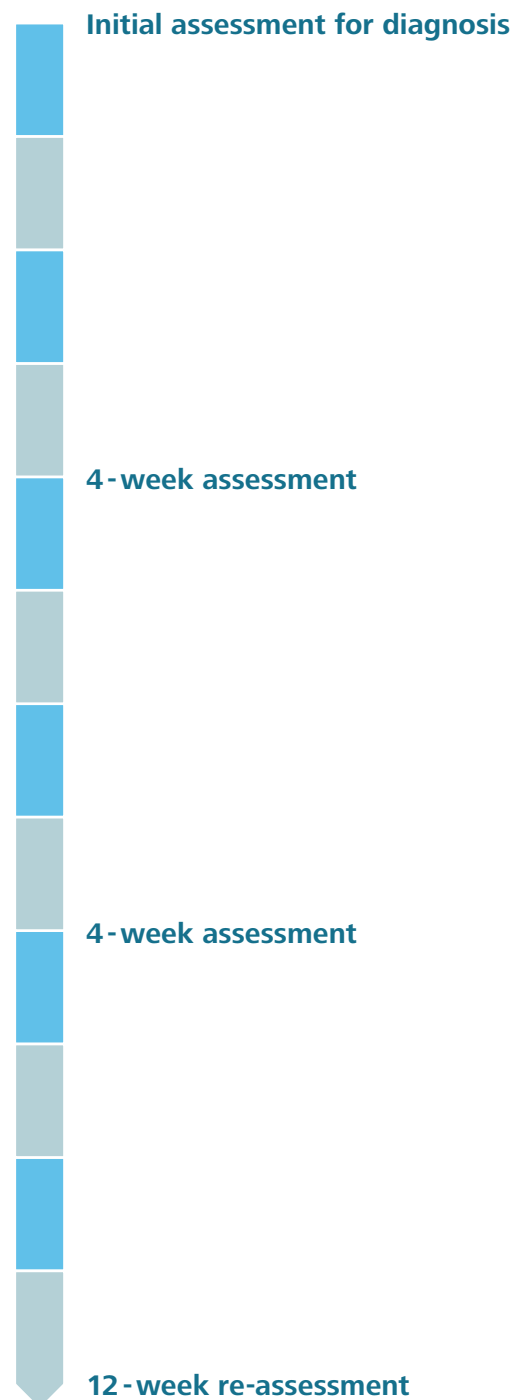
If an image of the wound has been captured, this image should be shared with the patient (if the patient wishes) and the health care provider responsible for ongoing care using NHS compliant digital technology.

- Patients/carers should also be provided with comprehensible written information about:
 - Signs of infection.
 - Hygiene (including hand hygiene).
 - Supported self-care of wound. This may include advice on dressing changes and taking an image of their own wound to monitor healing.
- Prior to transfer to another healthcare provider, patients should be provided with enough dressings to care for their wound for one week.
- Following transfer to another healthcare provider, patients should be informed of the name of the clinician in that organisation responsible for overseeing their care.

At each dressing change

- Cleanse the wound bed, the skin around the wound and the whole limb.
- If needed, debride the wound bed and remove hyperkeratosis.
- Apply simple moisturiser to the limb, avoiding the wound bed.
- If being treated with compression therapy, review reduction in ankle circumference and consider whether compression therapy should be adapted.
- Review effectiveness of treatment plan and escalate any concerns.

Review schedule



At least every 4 weeks

- Assess for reduction in wound size and document using wound photography.
- Assess condition of skin.
- Assess pain/discomfort.
- Measure to assess for reduction in limb swelling.

People with wounds that show no significant progress towards healing or are deteriorating should be escalated to the local specialist service for advice. Where possible, self-care should be encouraged, supported by the local care team under the supervision of the specialist team.

At 12 weeks

- People with wounds that show no significant progress towards healing or are deteriorating should be escalated to the local specialist service for advice. Where possible, self-care should be encouraged, supported by the local care team under the supervision of the specialist team.
- When wounds are progressing to healing but remain unhealed, a comprehensive re-assessment should be undertaken.

Prevention of recurrence

For all types of leg ulcer

- People with healed leg ulcers should be offered advice on skin care, footwear, exercise and mobility, rest and limb elevation, nutrition and self-care and if appropriate, smoking cessation and weight loss.
- People with healed leg ulcers should be provided with written information about their diagnosis and treatment plan and opportunities for supported self-care should be identified, discussed and incorporated into treatment plans as agreed with the individual.

Venous leg ulceration

- Care should be in line with the SIGN clinical guideline for venous leg ulcers¹⁸ which recommends maintenance in compression hosiery. People with healed venous leg ulcers and no symptoms of arterial insufficiency should be reviewed 6-monthly for replacement of compression garments and ongoing advice about prevention of recurrence. Changes in lower limb symptoms or skin problems relating to hosiery should trigger a comprehensive re-assessment that includes vascular assessment for arterial supply.

Explanatory Notes

The healing rates for venous leg ulcers reported in the literature^{4 5 6} suggest that at least 75% of patients with venous leg ulceration uncomplicated by other conditions should heal within 24 weeks. Therefore, if after 4 weeks of treatment, there is no evidence of progress towards healing, such people should be escalated to the local specialist service for review by a clinician working at an advanced level with the capabilities/competencies identified in the Competency Framework for Advanced Practitioners.

Similarly, people that are unhealed at 12 weeks and who show no significant progress towards healing should be escalated for specialist input.

Lower limb venous disease is characterised by episodes of remission (healing) and relapse (recurrence of ulceration). The frequency of recurrence of ulceration can be reduced by ongoing use of compression therapy and endovenous surgery⁵.

Reference List

- 1 Guest, J. F., Ayoub, N., McIlwraith, T., Uchegbu, I., Gerrish, A., Weidlich, D., et al. 2015. Health economic burden that wounds impose on the National Health Service in the UK. *BMJ*. 2015 Available at: <https://bmjopen.bmj.com/content/5/12/e009283>
- 2 Gray T.A., Rhodes S., Atkinson R.A., Rothwell K., Wilson P., Dumville J.C., et al. Opportunities for better value wound care: a multiservice, cross-sectional survey of complex wounds and their care in a UK community population. 2018 *BMJ Open* Available at: <https://bmjopen.bmj.com/content/8/3/e019440>
- 3 NHS Right Care 2017. NHS RightCare scenario: The variation between sub-optimal and optimal pathways. Betty's Story Available at: <https://www.england.nhs.uk/rightcare/wp-content/uploads/sites/40/2017/01/nhs-rightcare-bettys-story-narrative-full.pdf>
- 4 O'Meara, S. O., Cullum, N., Nelson, A. E. & Dumville, J.C. 2012. Compression for venous leg ulcers. *Cochrane Database of Systematic Reviews*, Issue 11. Art. No.: CD000265. DOI: 10.1002/14651858.CD000265.pub3. Available at: <https://www.cochranelibrary.com/cdsr/doi/10.1002/14651858.CD000265.pub3/full>
- 5 Gohel, M. S., Heatley, F., Liu, X., Bradbury R., Blubulia M.D et al 2018. A Randomized Trial of Early Endovenous Ablation in Venous Ulceration. *New England Journal of Medicine*, 378, 2105- 2114. Available at: <https://www.nejm.org/doi/full/10.1056/NEJMoa1801214>
- 6 Nelson EA, Adderley U. Venous leg ulcers. Systematic review 2016 *BMJ Clinical Evidence*. Available at: <https://www.ncbi.nlm.nih.gov/pmc/articles/PMC4714578/>
- 7 Guest, J. F., Ayoub, N., Mcilwraith, T., Uchegbu I., Gerrish A., Weidlich D., et al. Health economic burden that different wound types impose on the UK's National Health Service. *International Wound Journal*, 14, 322-330. Available at: <https://pubmed.ncbi.nlm.nih.gov/27229943/>
- 8 Kerr M. 2017 Diabetic foot care in England: An economic study *Insight Health Economics*. Available at: <https://diabetes-resources-production.s3-eu-west-1.amazonaws.com/diabetes-storage/migration/pdf/Diabetic%2520footcare%2520in%2520England%2C%2520An%2520economic%2520case%2520study%2520%28January%25202017%29.pdf>
- 9 NHS England. NHS Diabetes Prevention Program (NHS DPP). Available at: www.england.nhs.uk/diabetes/diabetes-prevention.
- 10 Paisey RB, Abbott A, Levenson R, Harrington A, Browne D, Moore J, Roe M. Diabetes-related major lower limb amputation incidence is strongly related to diabetic foot service provision and improves with enhancement of services: peer review of the South West of England. 2018 *Diabetic Medicine* 2018;35(1):53-62
- 11 Ahmad N, Thomas G.N., Gill P., Torella F. The prevalence of major lower limb amputation in the diabetic and non-diabetic population of England 2003-2013. 2016 *Diabetes and Vascular Disease Research* 2016;13(5):348-53
- 12 Moxey P.W., Hofman D., Hinchliffe R.J., Jones K., Thompson M.M., Holt P.J.E., 2010 Epidemiological study of lower limb amputation in England between 2003 and 2008. 2010 *British Journal of Surgery* 97: 1348-1353.
- 13 Ahmad N, Thomas G.N., Gill P., Chan C., Torella F., Lower limb amputation in England: prevalence, regional variation and relationship with revascularisation, deprivation and risk factors. A retrospective review of English hospital data. 2014 *Journal of the Royal Society of Medicine* Dec;107(12):483-9
- 14 NHS Symptoms of Sepsis. Available at: <https://www.nhs.uk/conditions/sepsis/>
- 15 Conte M.S., Bradbury A.W., Kolh P., Suresh K.R., Murad M.H., the GVG Writing Group. Global vascular guidelines on the management of chronic limb-threatening ischaemia 2019 *Journal of Vascular Surgery* 69, (6) Supp. 3S-125S.e40. Available at: [https://www.jvascsurg.org/article/S0741-5214\(19\)30321-0/fulltext](https://www.jvascsurg.org/article/S0741-5214(19)30321-0/fulltext)
- 16 NICE *Peripheral Arterial Disease - Clinical Guideline (CG147)* 2018 Available at: <https://www.nice.org.uk/guidance/cg147>

Continued overleaf >

- 17 NICE *Antimicrobial prescribing guidelines* 2020
Available at: <https://www.nice.org.uk/about/what-we-do/our-programmes/nice-guidance/antimicrobial-prescribing-guidelines>
- 18 SIGN. *Management of chronic venous leg ulcers - a national clinical guideline*.2010
Available at: <https://www.sign.ac.uk/our-guidelines/management-of-chronic-venous-leg-ulcers/>
- 19 BLS *Position Paper for assessing vascular status in the presence of chronic oedema prior to the application of compression hosiery: Position Document to guide decision making* 2019
Available at: <https://www.thebls.com/documents-library/assessing-vascular-status-in-the-presence-of-chronic-oedema-prior-to-the-application-of-compression-hosiery-position-document-to-guide-decision-making-a5>
- 20 NICE. *Diabetic foot problems: prevention and management. NICE Guideline [NG19]*. 2016
Available at: <https://www.nice.org.uk/guidance/ng19>
- 21 NICE *Pressure ulcers: prevention and management – Clinical Guideline [CG179]* 2014
Available at: <https://www.nice.org.uk/guidance/cg179>
- 22 NHS Improvement *Pressure ulcers: revised definition and measurement: Summary and recommendations*. 2018
Available at: https://improvement.nhs.uk/documents/2932/NSTPP_summary__recommendations_2.pdf
- 23 NICE *Leg ulcer infection: antimicrobial prescribing NICE Guideline (NG152)* 2020
Available at: <https://www.nice.org.uk/guidance/ng152>
- 24 Callam M.J., Harper D.R., Dale J.J., and Ruckley C.V., Arterial disease in chronic leg ulceration: an underestimated hazard? Lothian and Forth Valley leg ulcer study. *BMJ (Clin Res Ed)* 1987. 294 (6577): 929-31.
Available at: <https://pubmed.ncbi.nlm.nih.gov/3107659/>
- 25 Communication with North West Clinical Effectiveness Group for Diabetes, Wound Care & PAD (NWCEG, 2019)
- 26 Coleman, S., Nelson, E. A., Vowden, P. Vowden K., Adderley U. Sunderland L. et al. Development of A Generic Wound Care Assessment Minimum Data Set. 2017. *Journal of Tissue Viability*. 26 (4) 226-40.
Available at: <https://www.sciencedirect.com/science/article/pii/S0965206X17300529?via%3Dihub>
- 27 NICE *Varicose veins: diagnosis and management Clinical guideline [CG168]* 2013
Available at: <https://www.nice.org.uk/guidance/cg168>
- 28 International Lymphoedema Framework *Best Practice for the Management of Lymphoedema* 2006
Available at: <https://www.lympho.org/portfolio/best-practice-for-the-management-of-lymphoedema/>
- 29 Ashby, R.L., Gabe, R., Ali, S., Saramago P., Chuang L., Adderley U. et al VenUS IV (Venous leg Ulcer Study IV): Compression hosiery versus compression bandaging in the treatment of venous leg ulcers: a randomised controlled trial, mixed treatment comparison and decision analytic model. 2014. *Health Technology Assessment* 18: 15. Available at: <https://www.journalslibrary.nihr.ac.uk/hta/hta18570/%23/full-report#/abstract>
- 30 Jull AB, Arroll B, Parag V, Waters J. Pentoxifylline for treating venous leg ulcers. *Cochrane Database of Systematic Reviews* 2012, Issue 12. Art. No.: CD001733. DOI: 10.1002/14651858.CD001733.pub3
- 31 Manchester University NHS Foundation Trust and the University of York
VENUS-6 A randomised controlled trial of compression therapies for the treatment of venous leg ulcers
www.york.ac.uk/healthsciences/research/trials/research/trials/venus6



Lower Limb - recommendations for care

For further information, please refer to the full NWCSP Lower Limb Recommendations at NationalWoundCareStrategy.net



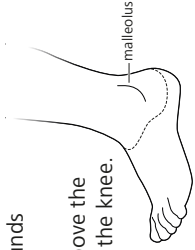
National Wound Care Strategy Programme
Excellence. Every Patient. Every Time.

Immediate and Necessary Care

For people with one or more wounds below the knee.

Leg wound - originating on or above the malleolus (ankle bone) but below the knee.

Foot wound - originating below the malleolus.



RED FLAGS

- Acute infection of leg or foot (e.g. increasing unilateral redness, swelling, pain, pus, heat).
- Symptoms of sepsis.
- Acute or chronic limb threatening ischaemia.
- Suspected deep vein thrombosis (DVT).
- Suspected skin cancer.
- Treat infection.
- Immediately escalate.
- For people in the last few weeks of life, seek input from their other clinicians.

Immediate care

- Cleaning and emollient.
- Simple low-adherent dressing.
- Leg wounds, first line mild graduated compression.
- Supported self-care (when appropriate).

Assessment times for diagnosis and treatment

- In hospital with diabetic foot wound - refer to MDT **within 24 hours**.
- Any other type of foot wound - refer to MDT **within 1 working day**.
- Leg wounds - **assess within 14 days**.

Wounds on the Foot

One or more wounds below the malleolus

Diagnosis and treatment

1 Assess and identify contributing causes for non-healing

2. Diagnose cause of non-healing and formulate treatment plan

People with confirmed or suspected diabetic foot ulceration

- Refer to diabetic foot team.
- Provide care in line the NICE [Guideline for Diabetic Foot Problems](#).

People with confirmed or suspected peripheral arterial disease

- Refer for vascular surgical opinion.
- Provide care in line the NICE [Guideline for Peripheral Arterial Disease](#).

Ongoing care and review

Review at each dressing change and at weekly intervals

- Monitor healing at **4-week intervals** (or more frequently if concerned).
- If unhealed at **12 weeks**, reassess.

Wounds on the Leg

One or more wounds above the malleolus

Diagnosis and treatment

1 Assess and identify contributing causes for non-healing

2. Diagnose cause of non-healing and formulate treatment plan

Leg wounds with an adequate arterial supply and no aetiology other than venous insufficiency

- Refer for venous surgical/endovenous interventions.
- Strong compression therapy.

Leg wounds with signs of arterial disease

- Refer for vascular surgical/endovenous interventions and advice on compression.
- Pending vascular opinion, if no symptoms of arterial insufficiency, continue with mild graduated compression.

Leg wounds of other or uncertain aetiology

- Refer for dermatology opinion (or other specialist depending on symptoms and service arrangements).
- Pending specialist opinion if no symptoms of arterial insufficiency, continue with mild graduated compression.

Lymphoedema

- Refer for expert diagnosis and advice about lymphoedema.

Ongoing care and review

Review at each dressing change and weekly intervals

Monitor healing at 4-week intervals (or more frequently if concerned)

- If deteriorating or no significant progress towards healing, escalate.

If unhealed at 12 weeks, reassess

- If progressing to healing but still unhealed, undertake comprehensive re-assessment.
- If deteriorating or no significant progress towards healing, escalate.

Following healing

Venous Leg Ulceration

- Compression hosiery.
- 6-monthly review for replacement of compression garments and ongoing advice.
- If changes in lower limb symptoms or skin problems relating to hosiery, undertake comprehensive re-assessment.

Published November 2020



National Wound Care Strategy Programme

Excellence. Every Patient. Every Time.

NationalWoundCareStrategy.net

NatWoundStrat@yhahsn.com

[NatWoundStrat](https://twitter.com/NatWoundStrat)